


OUR 2018 IMPACT



Empowering People
to Create 
Positive Change



J(OUR)NEY



Dear Thanda Family,

Looking back at the past decade, it is incredible to see how much we've grown – individually, as an organisation, and as a community. Thanda has evolved from a basic after-school programme to a way of thinking, feeling, and approaching life. Every day, we are confronted with choices and, at Thanda, we are all learning to be more mindful in the decisions we make, with the understanding that both our actions and inactions have consequences that cause a ripple effect.

In 2018, we took a deep, long look at our strategy, our goals, and our vision for the future. We realised that our five Game-changing Skills – Creativity, Empathy, Perspective, Self-esteem, and Critical thinking – and our Creative Learning Curriculum are really the common thread throughout all of our programmes, not just After-school. We believe that these skills are, as our mission states, necessary for developing resilience and becoming better parents, neighbours, and global citizens. Furthermore, we believe that the development of these skills are fundamental elements to a world where learning never stops; where people have the confidence to face challenges with resilience and rebel against the norm when necessary; where people take responsibility for how their actions impact others; and where people feel interconnected with one another and the environment.

As a team, we gave much thought to where our future is headed and re-evaluated our approach. We asked ourselves big questions – what impact do we want to have? Are we having that impact? How can we do better? – and came out of these exercises with renewed confidence and a clear vision for the future. Our approach will always be to focus on quality over quantity and depth over reach. Although our programmes will continue to grow and we have begun to share our curriculum across South Africa, we see it as critically important to be strategic about our expansion – ensuring that our programmes enable people to develop skills that will last well into the future and that our impact is truly sustainable.

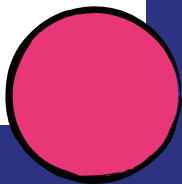
The growth that has transpired over the past decade would not have been possible without our supporters. We cannot thank you enough for your unwavering dedication to our mission and look forward to another great decade ahead.

With gratitude,



Angela Larkan & Tyler Howard

Executive Director/Co-Founder, Director of Programmes/Co-Founder



Two community members walk past Thanda's first building (2008).



Tyler Howard at the opening of Thanda After-school (2008).



EARLY CHILDHOOD DEVELOPMENT



AFTER-SCHOOL EDUCATION



ORGANIC FARMING



CREATIVE LEARNING

Since 2008, our sustainable & innovative programmes have directly impacted over 35,000 people.



AT THANDA, WE DEVELOP 5 SKILLS THAT CHANGE THE GAME



Positive self-esteem is fundamental to the development of so many essential skills and attributes -- enabling us to define our personal values and live by them; to celebrate the successes of others and view one another as equals; to set and strive for our own goals; and to meet failure with resilience. We believe that everyone has something unique and positive to contribute to the world, and we help them discover it.

Empathy is critical to manage one's own emotions and also to be able to connect with and relate to others. But in our community, we believe that empathy goes beyond simply being nice -- it extends to the manner in which you treat complete strangers, animals, the plants in your garden, and even the earth itself. Empathy enables us to move through life a bit more mindfully and peacefully.



Inextricably linked to empathy is the development of perspective; it has the power to transform the way people view themselves, their situations, and their roles as global citizens. We use perspective to create a culture of empowerment, rather than victimisation, and to think about the effects of both our actions and inactions.

Our definition of creativity is not bound by artistic endeavours (although we do love art!). For us, it represents an ability to think outside the box -- to try an entirely new trick on a skateboard or to figure out a solution to an ongoing pest problem in your garden. But, since we do love art, it is also a way to express our thoughts, experiences, and emotions.



The ability to think critically requires us to evaluate information objectively and rationally. It is, in a way, a precursor to all other Game-changing Skills -- helping us to see all sides of a given situation (perspective), understand the actions and opinions of others (empathy), form our own opinions (creativity), and stand up for what we believe in (self-esteem) -- and THAT is why we love it!

ZANDE'S STORY

When Zande started at Thanda ECD, she could not speak and her mother was concerned she had a permanent disability. Thanda's Head ECD Facilitator, Nokuthula, said she used to put her teeth together and, when she would try to speak, she would make a humming sound. So Nokuthula practiced activities with her that she had learnt during her ECD teacher training through LETCEE, such as blowing balloons and singing certain songs to open up her mouth and use those muscles. Nokuthula said, "Because I didn't want to take Zande out of the group, I did the activities with all of my kids. By June, she was able to speak well, and then her mother came to Thanda to say thank you."

Last year, Zande finished Grade R with flying colours - her skills in numeracy increased by 300%, critical thinking by 100% and self-esteem by 31%.

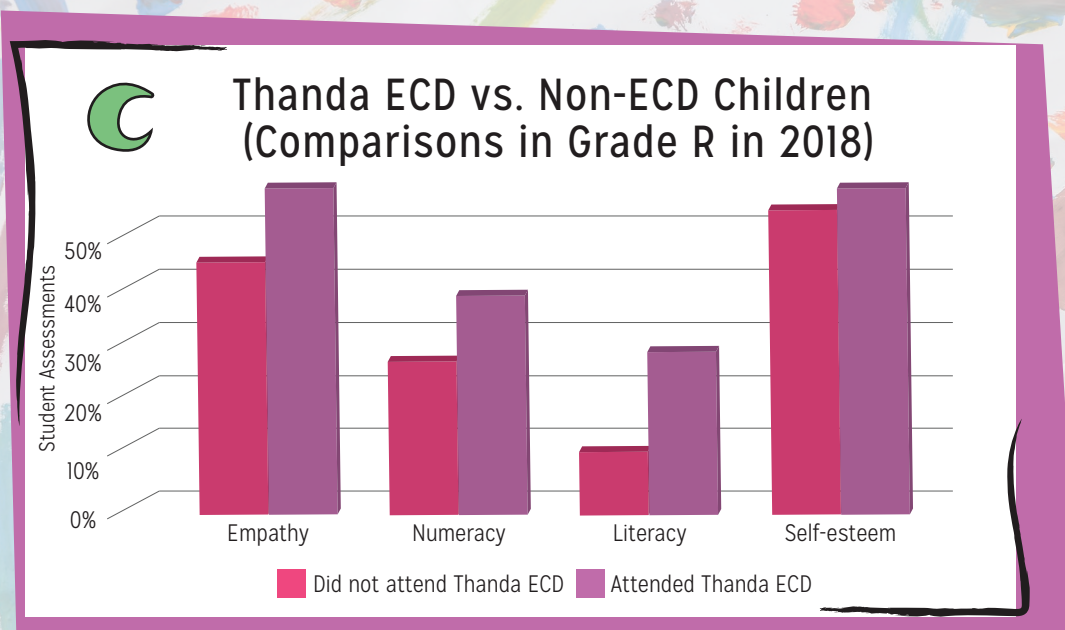


STAFF/GUARDIAN CAPACITY BUILDING

- 10 Guardian Workshops on: Socio-emotional Skills, Nutrition, & Literacy
- Singakwenza Training - Recycled Toys ● Thanda Curriculum Development & Training
- 4 Staff Completed LETCEE NQF4 Training ● Siyakwazi Training - Diversity & Inclusion

"There is a difference health wise and academically in my child since she started at Thanda ECD. She is now very healthy, and she has improved a lot in her academics. There are more things that she knows now in life."

- Parent of an ECD Participant



FUN FOUNDATIONS



Addressing the need for more ECD services in our community, we created Fun Foundations in October 2018. Fun Foundations playgroups were started at 6 of our farms with 47 children. Sessions take place daily under trees next to the farms and we use the Singakwenza (partner NPO) curriculum to make educational resources from recycled materials.



“I have learnt how to help them grow and learn. They can sing rhymes and name colours, or count to five or ten. They know the differences between big things and small things, and they have respect for one another like brothers and sisters.”

- Nafisa, Fun Foundation volunteer

264%

Through our M & E assessments, we found that in only four months children on average improved their skills in awareness, colours, shapes, numbers, patterns, body knowledge, and physical development by 264%!



AFTER-SCHOOL EDUCATION



A Game-changing Solution

Our After-school Programmes aim to develop Game-changing Skills that are vital to creating the next generation of resilient, life-long learners who understand interconnectedness, rebel against the norm when necessary, and contribute positively to their communities.

90%
attendance
rate



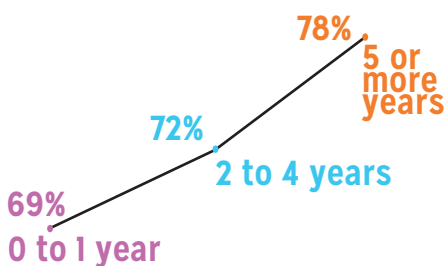
We began with just sports & homework help (2008).



STAFF CAPACITY BUILDING

- Weekly arts & critical thinking training
- WordWorks Literacy Training
- Siyakwazi Diversity & Inclusion Training

OF YEARS IN THANDA & SELF-ESTEEM FINAL RESULTS



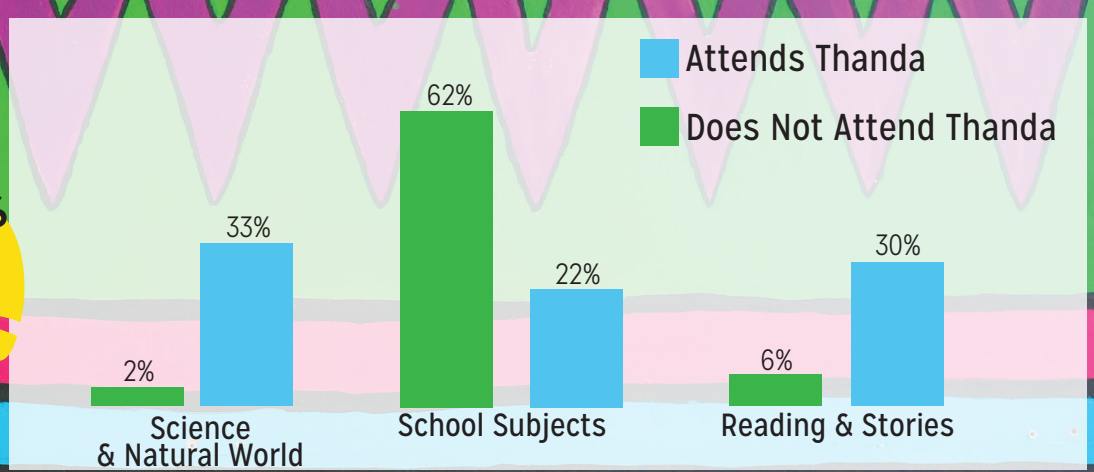
2018 IMPROVEMENTS

29%	Self-esteem
41%	Perspective
66%	Creativity
82%	Empathy
54%	Literacy
64%	Numeracy
23%	Empirical Thinking
30%	Critical Thinking



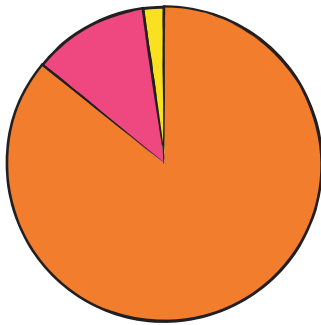
In 2018, we built 5 playgrounds at local primary schools!

Primary School Learners: Favourite Things to Learn



Who is your favourite character?

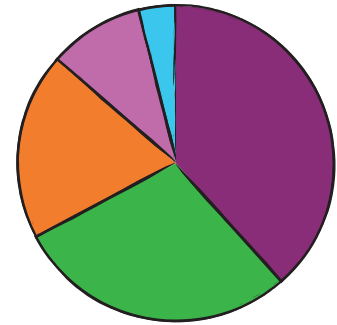
Term 1



Spider-Man Iron-Man Simba

The shift from popular superhero characters to story book characters tells us that children in Grades R & I are not only improving their literacy, but also connecting and engaging with the characters and messages in the stories.

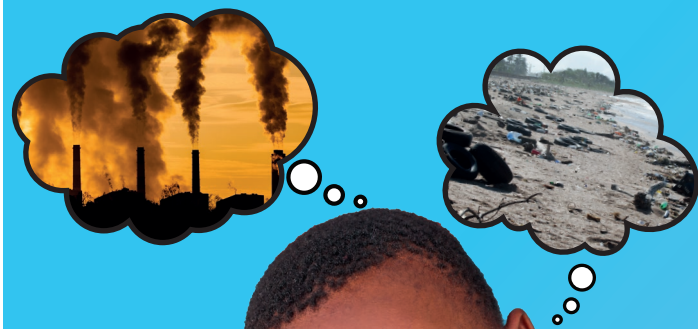
Term 4



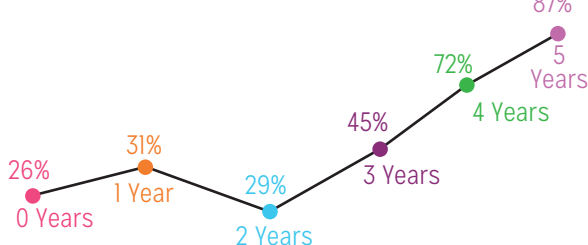
Very Hungry Caterpillar Colour Monster
Spider-Man Mr. Panda Odd Dog Out

A DEEPER LOOK AT PERSPECTIVE: An example of how we conduct our monitoring and evaluation

Our Monitoring & Evaluation team evaluated changes in our Grades 6-9 After-school participants' perspectives by showing two images (right) and asking them what they thought the short and long-term consequences might be. Perspective increased by 47 percent -- demonstrating that students are becoming more cognisant of the human impacts on our natural environment.



Perspective Final Results (Knowledge of Other Cultures & Ecosystems) & Years in Thanda



"My hero is Captain America because he can use his shield to protect people. I see myself as a hero to my friend Khanyisile because I protect him when other kids want to bully him."
- Mnqobi, After-school Participant



CREATIVE LEARNING

Changing Education

We provide lesson plans and resources for partners by sharing our Creative Learning Curriculum (CLC). Through additional training & mentoring, we guide our partners through experiences that will help them build Game-changing Skills among children and youth in their own education programmes.

IN 2018, WE HELD...



↖ For 89% of the teachers, this was the first time they had engaged in creative visual arts.

“I learnt that knowing myself first before I can teach kids is important, and I learnt a lot of different activities and techniques for supporting different children.”

-Training Mentoree in Eastern Cape, South Africa

ORGANIC FARMING



Transforming Rural Livelihoods



We began in 2013 with 21 Farmers.

Through ongoing mentoring and support, our Organic Farming Programme empowers community members to sustainably improve household nutrition, strengthen self-reliance, and build a local economy.

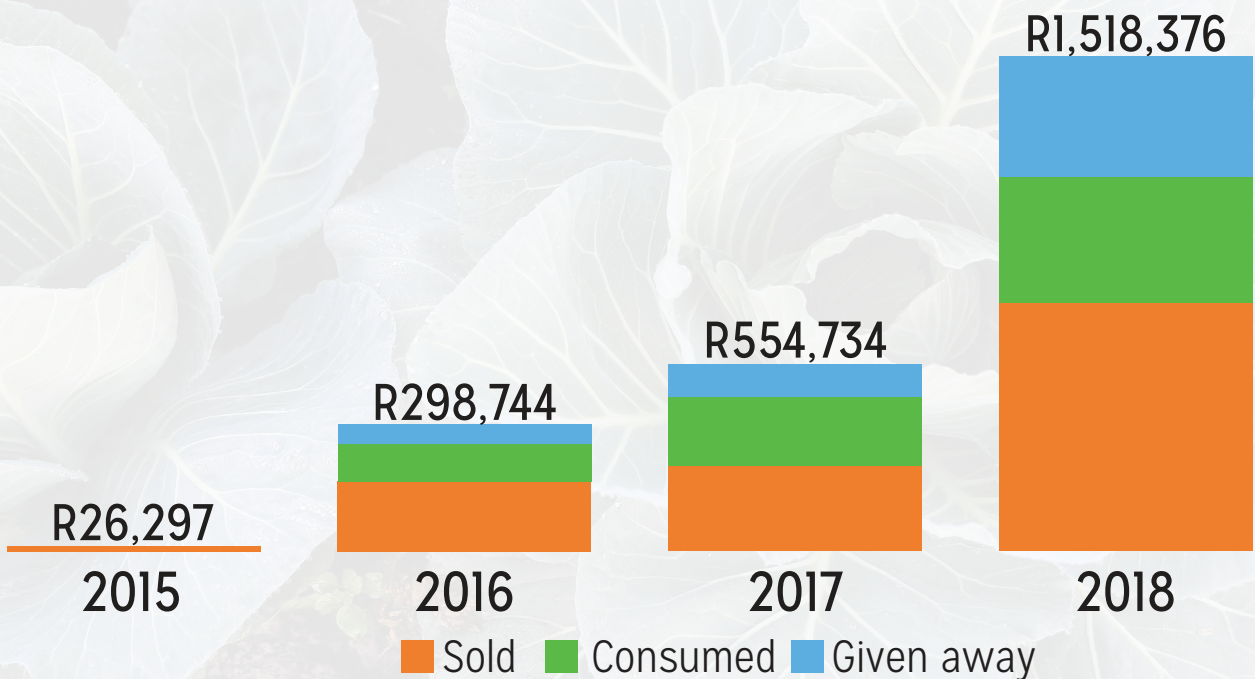
23 Farms

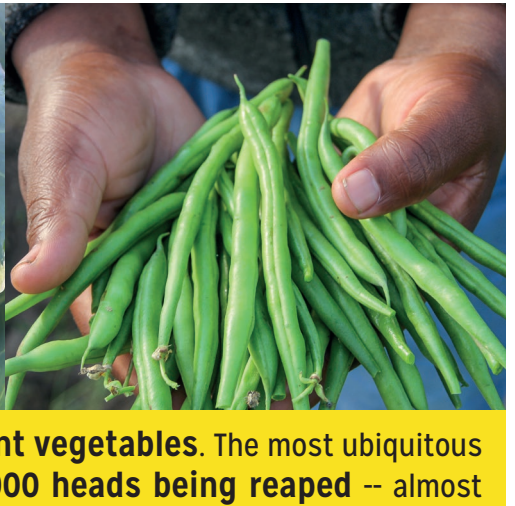
392 Farmers

R1.5
MILLION! ★

We broke a record! Production increased by 174% to R1,518,376! R1.4 million of this produce stayed in the local community making a significant impact in a community where originally only 12% of adults were economically active.

Yearly Production Comparisons





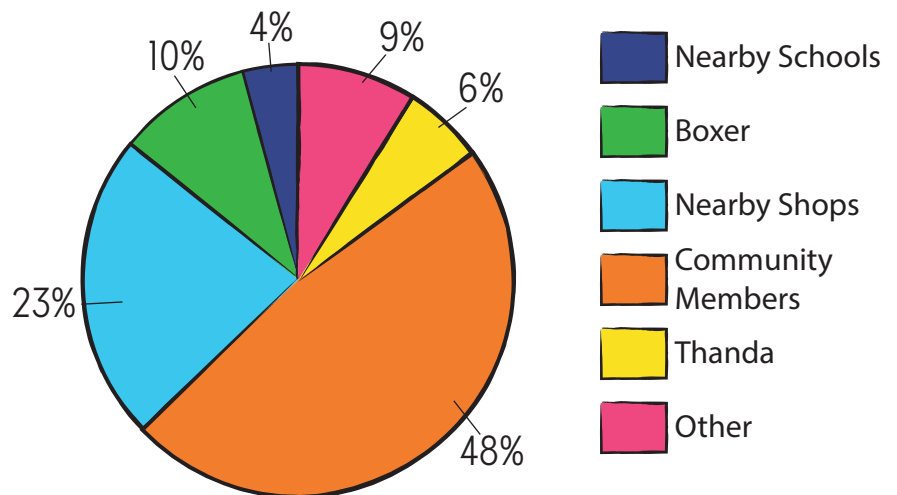
In 2018, we produced **17 different vegetables**. The most ubiquitous was **cabbage with over 50,000 heads being reaped** -- almost four times as many cabbages as the previous year.

2,130

The number of household members of farmers that are consuming fresh, locally grown, organic vegetables and benefitting from a new source of income.



2018 SALES



Why do you give vegetables away?

In 2018, Farmers gave away 10% of their produce to their neighbours. One farmer said “I give to people who ask - young or old - I don’t choose because it is the right thing to do.” Other Farmers choose to give to those in need. “There is a Granny that I normally give extra veggies to. She is staying alone. She does not receive grant [assistance] and her husband passed away,” says Farmer Thembeni.



THANDA COMMUNITY CENTRE



Opening of the Community Centre in 2014

The Community Centre is a safe place where children are free to be themselves and where they can learn, play and explore. It's home to the only science lab, library, skate park and art centre in the municipality. It's all powered by solar energy and rain water is harvested. But most importantly, it's a place where children and youth in our community can feel at home.

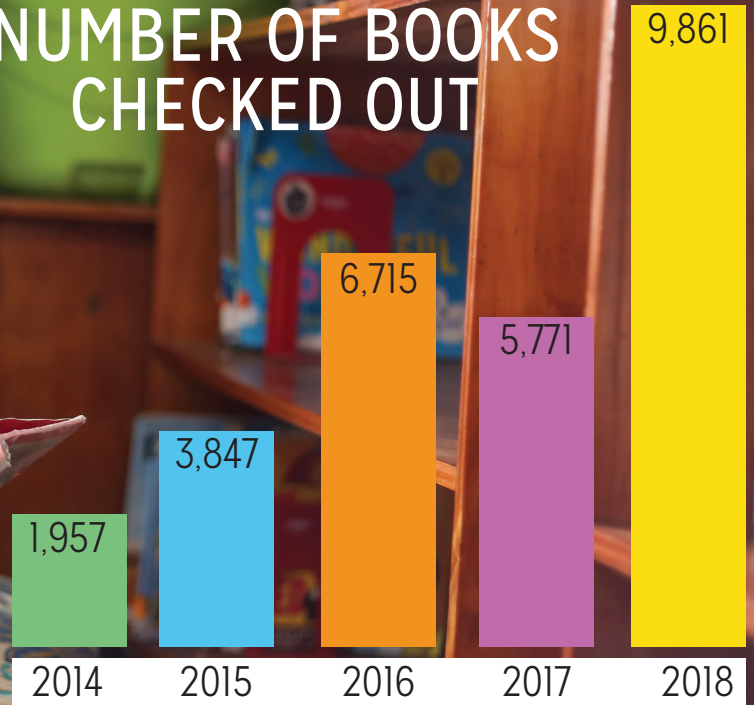


IN 2018...

	<p>Solar Power Our Community Centre is completely solar powered!</p>		<p>4307 Visits on holidays and weekends.</p>		<p>5348 Children reached through outreach at local schools.</p>
<p>133 Members on the Thanda Chess Team.</p>		<p>Agri-Hub A place for farmers to meet, collaborate and share resources.</p>		<p>81 Members in the Eager Beavers Book Club.</p>	
	<p>150K Litres of rainwater harvested at Thanda for drinking.</p>		<p>Recycle Tens of thousands of items collected and used for arts.</p>		<p>Boys Night Monthly camp-outs to promote self-esteem and have fun.</p>



NUMBER OF BOOKS CHECKED OUT



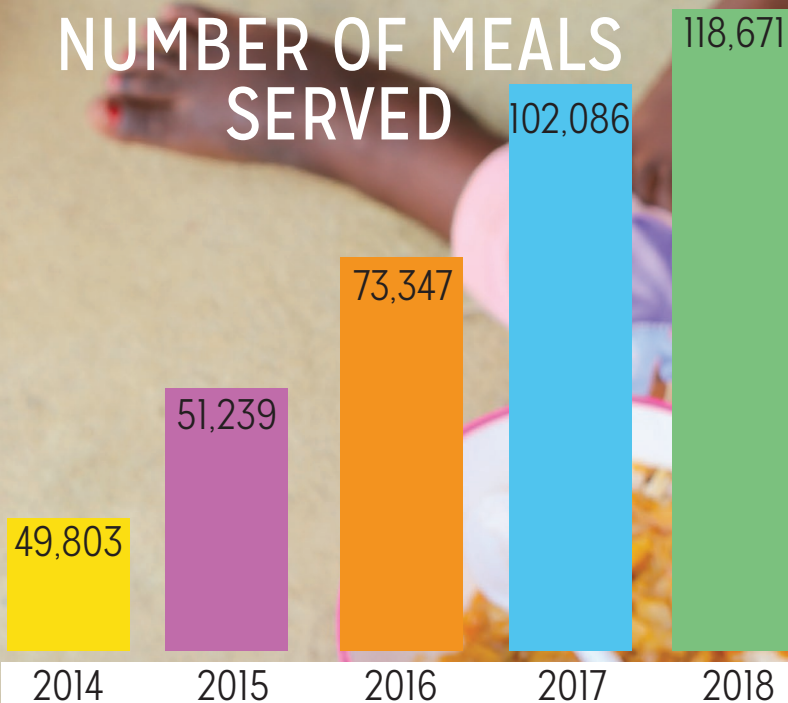
Our Community Centre is open 365 days a year



“ Children come from far away to play at Thanda on the holidays and weekends. They come with their cows and tie them up at the bottom of the hill and take turns taking them to water so they can all play. They stay all day...they don't even go home to get a jacket if it gets cold. If it rains, they do art and use the library. ”

- Noh, After-school Facilitator

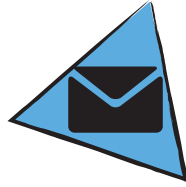
NUMBER OF MEALS SERVED



GET IN TOUCH



Call us:
+27 (39) 699 1253
(Mon-Fri 8am-5pm)



Email us:
info@thanda.org
(We will get back to you
within 24 hours!)



Find us:
Mtwalume, KZN
Open 365 days a year!



*Thank you to all of our partners for making
everything possible.*

